



EPS - Datasheet

Series E/PS 9000-1U

EPS's programmable high performance power supplies »E/PS 9000 1U« series are especially suitable for test systems and industrial controls, but also for laboratories and repair shops, due to their compact construction in a 19" enclosure with 1 height units (1U). DC output voltages between 0-80V and 0-750V, output currents between 0-6A and 0-100A and output power ratings of 0-3000W are available.

Actual values, set values, status and alarms are clearly represented on the four and/or five digits LCD-display. For remote control using a PC or PLC the devices are provided as standard with an Ethernet and USB-B slot on the rear side as well as a galvanically isolated analog interface. All interfaces are isolated to the unit with 1500V DC.

In addition, the devices offer as standard the parallel switching in Shared Bus operation for constant current sharing. Operating in this way allows up to 10 units to be combined to a single system, for getting a higher total power up to 30kW. The possibility to connect the compatible power supplies via a Shared Bus, in order to create a so-called two-quadrant system is given, too. Typical applications i.e. for the source-sink principle are: battery test with automatic charge and discharge cycles, automotive electronic tests with simulation of transients (like voltage break-ins during engine starts) and cyclic charging and discharging of capacitors.

All models are controlled by microprocessors with a resolution of up to 16bit. These enable an exact and fast measurement and display of actual values. With the lock push button the controls can be locked, in order to protect the equipment from unintentional misuse. With the configuration DC-output after Power ON" the user can define, how shall be the state of the DC-ouput after switching on the Power Supply. Models with a nominal output voltage of 200V or higher include a discharge circuit for the output capacities. For no load or low load situations, it ensures that the dangerous output voltage can sink to under 60V DC in max. 10 seconds after the DC output has been switched off (SELV according to EN61010).

An option is the calibration with protocol.

Energy efficiency: Auto-ranging, high efficiency, temperature controlled fans

Scope of delivery:

Power Supply Unit

Test report

Mains cord Euro,UK, US and/or Swiss plug (depending on destination)

Share-bus plug

Plug for Remote Sense

USB cable 1,8m

USB-Stick with manual and Software

E/PS 9360-15 1U Laboratory Power Supply



E/PS 9000-1U_Front

General data

Technology	Switching
Operation modes	CV. CC. CP
Mains	150-264 VAC, derat.to 1000W:100-150V, 1ph.+N,PE
Input frequency	45-65Hz
Power factor	>0,99
Display	LCD 4/5
Voltage resolution	0,1 V
Voltage accuracy	<=0,1%
Voltage Stability Load	<0,05% (0-100%)
Voltage Stability Mains	<0,02% (+-10%)
Response time Voltage	<1,5ms (10-100%)
Rise time Voltage	max.15ms (10-90%)
Current Resolution	0,001 A
Current Accuracy	<=0,2%
Current Stability Load	<0,15% (0-100%)
Current Stability Mains	<0,05% (+-10%)
Output Current Limitation	Standard
Power Accuracy	<1%
Overvoltage category	2
Overheat protection	Standard
Isolation In-/Output	2500V DC
Isolation Output/Enclosure	neg.+400VDC, Pos.+760VDC max.
Protection class	1
Series operation	Standard (400V max.)
Parallel operation	Master-Slave

Current sharing	Standard
Cooling	Fan
Operation temperature	0-50°C
Storage temperature	-20...70°C
Humidity	<80% n.c
Attitude	<2000m
Design	19 inch
Standards	EN 61010-1, EN 61326-1:2013-07, EN55022 cl.B
Power fail	Standard
Output Preset	Standard
Memory	5 Profile
Capacity	470µF

Interfaces

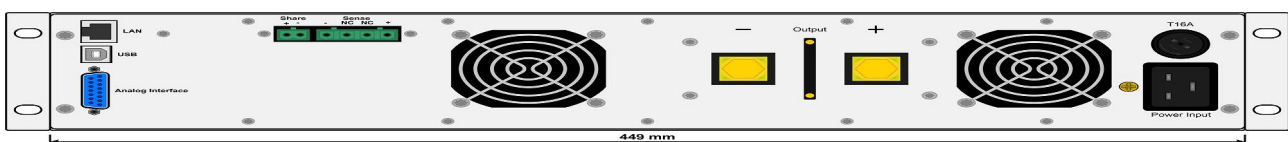
Analog Isolation	Standard
USB Interface	Standard
Ethernet Interface	Standard
Software	Standard EPS/PC, Option EPS/MC

Technical data

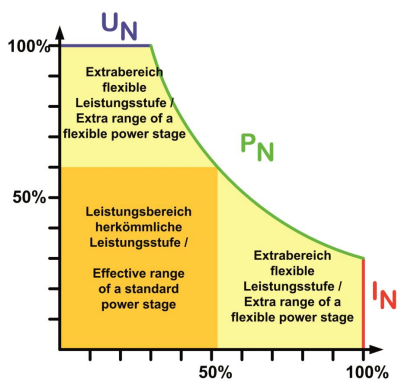
Output Voltage	0-360 VDC
Output Current	0-15 A
Output Power	0-1500 W
Efficiency	<=94%
Ripple U	<195mVpp/33mVrms
Ripple I	< 10 mAPP
Remote Sensing	Standard
Dimensions in mm (WxHxD)	19" x 44 x 500
Weight	10,5 kg
Order code	200002

Options

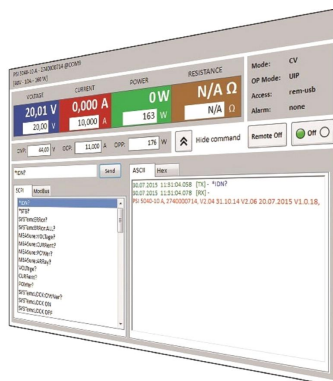
Option 1	Calibration with protocol EPS/I9000 CAL
Option 2	Extended Warranty 3 / 5 years EPS/G



E/PS 9000-1U_rear



Autoranging



EPS/PC_Software



Subject to modification without notice, errors and omissions excepted

EPS Stromversorgung GmbH
Electronic Power Supplies
Alter Postweg 101, 86159 Augsburg/Germany
Tel.: +49 (0) 821 570451-0
E-mail: sales@eps-germany.de
www.eps-germany.de