



## EPS - Datasheet

### Series E/PS 9000 T

EPS's space-saving laboratory power supplies of series "E/PS 9000 T" are especially suitable for the use in test and development applications, in laboratories and research. Owing to a special filtering, the HF and NF output ripple are reduced to a level closing up to those of linear technology power supplies.

Different units with DC output voltages between 0-40V (SELV) and high 0-500V, currents between 0-4A and 0-60A and power from 0- 320/640/1000/1500W.

All models are microprocessor-controlled. This allows accurate and rapid measurement and display of actual values. Setpoints and actual values, status displays and messages are clearly displayed on an intuitive TFT touch panel. Models with a nominal voltage of 200V or higher include a discharge circuit for the output capacities. For no load or low situations, it ensures that the dangerous output voltage can sink to below 60V DC in max.10 seconds (SELV according to EN61010). The implemented supervisions can help to reduce test equipment and make it almost unnecessary to install external supervision hardware and software.

For the integration into semi-automatic and remotely controlled test and automatic systems, the units offer a USB interface for standard.

The control software EPS/PC (124175) for Windows allows remote control of multiple similar or different devices (optional, up to 20). It has a clear display for all set and actual values, as well as direct input mode of SCPI and ModBus commands and a firmware update function.

Optionally available are an isolated Analog-/USB/Ethernet interface module, calibration protocol and extended warranty up to 5 years as well a UK wall socket adapter.

Energy efficiency: Auto-ranging, high efficiency, temperature controlled fans

Scope of delivery:

Power Supply Unit

Test report

Mains cord 1,5m

IEC plug (option UK or US plug)

USB cable 1,8m

USB-Stick with manual and Software

## E/PS 9200-10 T Laboratory Power Supply

---



E/PS 9000-T

### General data

|                            |                                    |
|----------------------------|------------------------------------|
| Technology                 | Switching                          |
| Operation modes            | CV. CC. CP                         |
| Mains                      | 90-264 VAC, 1ph.+N                 |
| Input frequency            | 45-65Hz                            |
| Power factor               | >0,99                              |
| Display                    | TFT Touch Panel 4.0                |
| Voltage resolution         | 0,01 V                             |
| Voltage accuracy           | <=0,1%                             |
| Voltage Stability Load     | <0,05% (0-100%)                    |
| Voltage Stability Mains    | <0,02% (+-10%)                     |
| Response time Voltage      | <1,5ms (10-100%)                   |
| Rise time Voltage          | max.60ms (10-90%)                  |
| Current Resolution         | 0,001 A                            |
| Current Accuracy           | <=0,2%                             |
| Current Stability Load     | <0,15% (0-100%)                    |
| Current Stability Mains    | <0,05% (+-10%)                     |
| Output Current Limitation  | Standard                           |
| Power Accuracy             | <1%                                |
| Overvoltage category       | 2                                  |
| Overheat protection        | Standard                           |
| Isolation In-/Output       | 2500V DC                           |
| Isolation Output/Enclosure | neg.400VDC, pos.400VDC+VDCout max. |
| Protection class           | 1                                  |
| Series operation           | Standard (400V max.)               |
| Parallel operation         | Standard                           |
| Cooling                    | Fan                                |

|                       |   |
|-----------------------|---|
| Operation temperature | 0-50°C                                    |
| Storage temperature   | -20...70°C                                |
| Humidity              | <80% n.c                                  |
| Attitude              | <2000m                                    |
| Design                | Tower                                     |
| Standards             | EN61010-1,EN61326,EN61010,EN55022 class B |
| Power fail            | Standard                                  |
| Output Preset         | Standard                                  |
| Memory                | 5 Profile                                 |

**Interfaces**

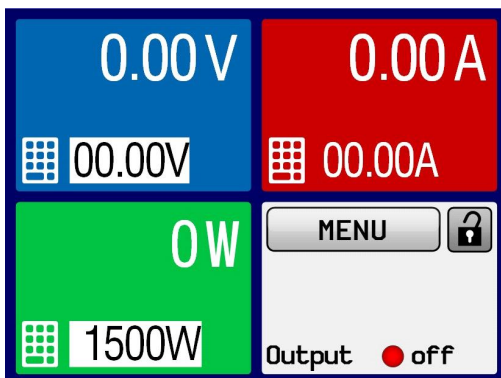
|                    |                          |
|--------------------|--------------------------|
| Analog Isolation   | Option EPS/IF-KE4        |
| Accuracy Interface | U=1,5mV/I=0,8mA/P=0,012W |
| USB Interface      | Standard                 |
| Ethernet Interface | Option EPS/IF-KE4        |
| Software           | Standard EPS/PC          |

**Technical data**

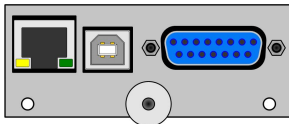
|                          |                 |
|--------------------------|-----------------|
| Output Voltage           | 0-200 VDC       |
| Output Current           | 0-10 A          |
| Output Power             | 0-640 W         |
| Efficiency               | ~93%            |
| Ripple U                 | <50mVpp/<6mVrms |
| Ripple I                 | <1,5mArms       |
| Remote Sensing           | Standard        |
| Dimensions in mm (WxHxD) | 92 x 237 x 352  |
| Weight                   | 7,5 kg          |
| Order code               | 200115          |

**Options**

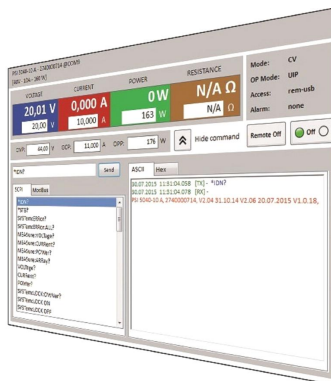
|          |   |
|----------|---|
| Option 1 | Calibration with protocol EPS/I9000 CAL |
| Option 2 | Extended Warranty 3 / 5 years EPS/G     |
| Option 3 | UK wall socket adapter EPS/UK           |



EPS 9000\_Display multi-language



EPS\_IF KE4



EPS/PC\_Software

---

Subject to modification without notice, errors and omissions excepted

EPS Stromversorgung GmbH  
Electronic Power Supplies  
Alter Postweg 101, 86159 Augsburg/Germany  
Tel.: +49 (0) 821 570451-0  
E-mail: [sales@eps-germany.de](mailto:sales@eps-germany.de)  
[www.eps-germany.de](http://www.eps-germany.de)