



## EPS - Datasheet

### Series E/PS 3000 C

EPS's microprocessor controlled DC power supplies »E/PS 3000 C« series are inexpensive desktop devices for a wide range of laboratory applications. Available are devices with power up to 640W, output voltage from 0-40V to 200V and currents up to 40A. They ensure clean output voltages and currents with low ripple and noise.

All versions have a power-controlled output stage. In laboratory environments, a single EPS 3000 C can replace multiple devices of different voltage and current classes. The small housing dimension, the intuitive control panel with the coloured display, together with the DC output accessible on the front, facilitate the construction, connection and operation on the site.

In addition to standard features of power devices, they provide some additional features as standard, which simplify working with these devices and help save time. And for setting values, monitoring limits and user profiles it can also be quickly configured and read back.

The Laboratory power supply units can be extended by different interfaces. For this, optional digital interfaces such as USB and Ethernet and/or an analogue interface are available. All interfaces and the control unit are galvanically isolated to the input.

The free Software (ModBus-RTU and SCPI capable) offers e.g. a feature called Sequencing, where the unit is controlled through a semi-automatic table in CSV format.

Scope of delivery:

Power Supply with carrying handle/tilt stand

Test report

Mains cable (Schuko+UK plug)

USB-Stick with manual and Software EPS/PC

## E/PS 3040-10 C Laboratory Power Supply

---



E/PS 3000 C\_Front

### General data

|                            |                  |
|----------------------------|------------------|
| Technology                 | Switching        |
| Operation modes            | CV. CC. CP       |
| Mains                      | 90-264 VAC       |
| Input frequency            | 45-66 Hz         |
| Power factor               | >0,99            |
| Display                    | TFT color        |
| Voltage resolution         | 0,01V            |
| Voltage accuracy           | <0,1%            |
| Voltage Stability Load     | <0,05% (10-100%) |
| Voltage Stability Mains    | <0,02% (+-10%)   |
| Response time Voltage      | <1,5ms           |
| Current Resolution         | 0,01A            |
| Current Accuracy           | <0,2%            |
| Current Stability Load     | <0,15% (1-100%)  |
| Current Stability Mains    | <0,05% (+-10%)   |
| Output Current Limitation  | Standard         |
| Power Accuracy             | <1% Pnom         |
| Overheat protection        | Standard         |
| Isolation In-/Output       | 2,5kV max.       |
| Isolation Output/Enclosure | +/-400V          |
| Protection class           | 1                |
| Cooling                    | Fan              |
| Operation temperature      | 0...50°C         |
| Storage temperature        | -20...70°C       |
| Humidity                   | <80% n.c.        |

Series E/PS 3000 C

|               |                    |
|---------------|--------------------|
| Attitude      | <2000m             |
| Design        | Desktop            |
| Standards     | EN 61010, EN 60950 |
| Output Preset | Standard           |
| Memory        | Standard           |
| Capacity      | out 3225 $\mu$ F   |

**Interfaces**

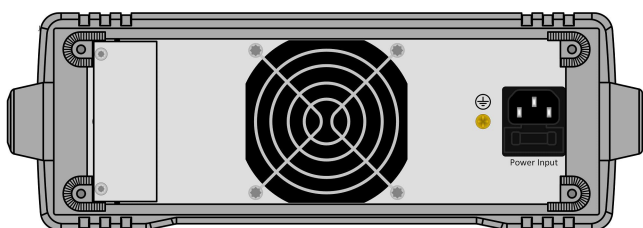
|                    |                           |
|--------------------|---------------------------|
| Analog Isolation   | Option EPS/IF-KE5 USB/ANA |
| Accuracy Interface | 0-10V: <0,2%, 0-5V: <0,4% |
| USB Interface      | Option EPS/IF-KE5 USB     |
| Ethernet Interface | Option EPS/IF-KE5 USB/LAN |
| Software           | Standard EPS/PC           |

**Technical data**

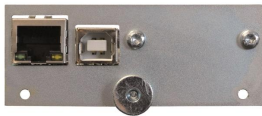
|                          |                     |
|--------------------------|---------------------|
| Output Voltage           | 0-40 VDC            |
| Output Current           | 0-10 A              |
| Output Power             | 0-160 W             |
| Ripple U                 | <3mVrms/30mVpp      |
| Ripple I                 | <15mArms            |
| Remote Sensing           | Standard max.5%Unom |
| Dimensions in mm (WxHxD) | 260 x 88 x 323      |
| Weight                   | ~4 kg               |
| Order code               | 200390              |

**Options**

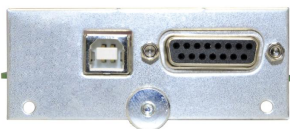
|          |   |
|----------|---|
| Option 1 | Calibration with protocoll EPS 3000-C CAL |
|----------|---|



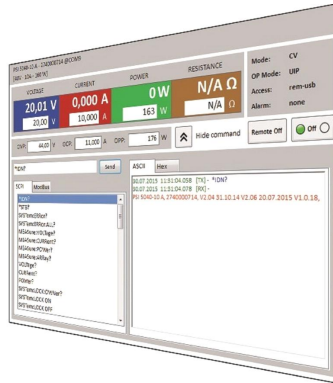
E/PS 3000 C\_Rear



EPS/IF-KE5 USB-LAN



EPS/IF-KE5 USB-ANALOG



EPS\_PC\_Software

---

Subject to modification without notice, errors and omissions excepted

EPS Stromversorgung GmbH  
Electronic Power Supplies  
Alter Postweg 101, 86159 Augsburg/Germany  
Tel.: +49 (0) 821 570451-0  
E-mail: [sales@eps-germany.de](mailto:sales@eps-germany.de)  
[www.eps-germany.de](http://www.eps-germany.de)