



EPS - Datasheet

Series EPS/HC 4000-M

The series »EPS/HC 4000-M« from EPS Electronic Power Supplies is a range of adjustable, heavy-duty, switched mode power supplies offering standard output voltages from 6V up to 40V, output currents up to 2200A and output power ratings up to 48 kW (different other output voltages until 600V/currents/power ratings upon request). The units are used in high-power environments such as electroplating and Plasma (surface treatment, hardening), multiple industrial applications (powering of electric engine starters, DC motors, automatic end-of-line test systems for the testing of contactors, relays, switches) and heavy duty components in general.

All units are short-circuit proofed and overload protected. Moreover, your DUT is protected against overvoltage (OVP) and overcurrent (OCP).

The heavy duty switch mode power stage is build in a compact build-in housing in 4 different form factors (M1, M2, M3, M4) .

The modules are by standard without control.

The power modules can be controlled via the optional, external and comfortable LCD user panel »EPS/HC280«.

Optionally analog and digital interfaces (modules) for RS485, ProfiBus, ProfiNet and USB-Adapter (on analog) are available to control all the functions via a PC. The DC sources with high output current are available with Cu bars and with high output voltage with HDFK terminals.

Remote sensing can be optionally done via a dedicated input which is directly connected to the test equipment, in order to compensate for voltage drops on the lines.

With the reverse polarity option, the power supply can also be used as a bipolar device (output voltage up to 60V max).

Energy Efficiency: High efficiency

Scope of delivery:

Power Supply

Brackets (Design M3, M4)

Operation Manual

EPS/HC 40006-1000-M DC Current Source



EPS/HC 4000-M1 Front

General data

Technology	Switching
Operation modes	CV. CC
Mains	3x380-460VAC +/- 10%
Input frequency	50/60Hz
Power factor	>0.95
Input Current Limitation	Standard
Display	Option EPS/HC 280
Voltage resolution	Opt. 0,01V
Voltage accuracy	<0,5%
Current Resolution	Opt. 0,1A
Current Accuracy	<1%
Output Current Limitation	Standard
Overheat protection	Standard
Protection class	IP20
Parallel operation	Standard
Cooling	Fan IP20
Operation temperature	0-40°C
Humidity	85% n.c
Attitude	1000m NN
Design	Built-in
Standards	EN55011(A,B) EN61000-6-4 EN61000-6-2 EN50178
Power fail	Standard
Alarmmanagement	Optional

Interfaces

Analog Isolation	Opt. EPS/HC IF-DASI-SD
USB Interface	Option EPS/IF-UTA(101994)
RS485 Interface	Option EPS/HC IF-RS485
Profibus	Option EPS/HC IF-PB1
Ethernet Interface	Option EPS/HC IF-LAN

Technical data

Output Voltage	0-6 VDC
Output Current	0-1000 A
Output Power	6000 W
Input Current	12A
Efficiency	<92 %
Ripple U	<1%
Remote Sensing	Option EPS/HC Sense
Dimensions in mm (WxHxD)	314 x 262 x 455(492)
Weight	40 kg
Order code	200942

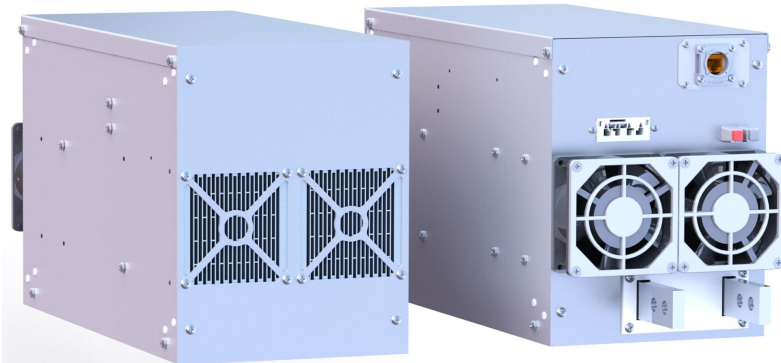
Options

Option 1	Reverse Polarity EPS/HC RP
----------	----------------------------



EPS/HC 4000-M2_Front

Series EPS/HC 4000-M



EPS/HC 4000-M2 rear



EPS/HC 4000-M3 mit Haltegriffen/brackets



EPS/HC 4000-M3 rear



EPS/HC 4000-M4 front



EPS/HC 4000-M4 rear



EPS/HC280 Control Panel

Subject to modification without notice, errors and omissions excepted

EPS Stromversorgung GmbH
Electronic Power Supplies
Alter Postweg 101, 86159 Augsburg/Germany
Tel.: +49 (0) 821 570451-0
E-mail: sales@eps-germany.de
www.eps-germany.de