

## EPS - Datasheet

### Series EPS/PU 10000 6U

EPS's Electronic Power Supplies »EPS/PU 10000 6U« series new electronic high performance ATE power supplies are especially suitable for test systems and industrial controls due to their compact construction in a 19" enclosure with 6 height units (6U). DC output voltages between 0-360V (SELV) and 0-2000V, output currents between 0-80A and 0-480A with an output power of 60kW-3,84MW are available.

All models are controlled by microprocessors for fast and exact measurement of actual values (FPGA, latest SiC technology).

For remote control using a PC or PLC the devices are provided as standard with an Ethernet, USB-B slot on the rear side as well as a galvanically isolated analog interface. Via optional plug-in interface modules, other digital interfaces such as RS232, Profibus, ProfiNet, ModBus TCP, CAN, CANopen or EtherCAT can be added. These enable the devices to be connected to standard industrial buses simply by changing or adding a small module. The configuration, if necessary at all, is simple.

The devices in series EPS/PU 10000 6U represent matching models to series E/PS 10000 or E/PSI 10000. They serve as extension modules, so called power units, which are intended to build master-slave systems with higher total power. Devices from series E/PSI 10000 or E/PS 10000, which both have a TFT touch display, can serve as master unit, but all EPS/PU 10000 6U can also serve as master for other 10000 series power supplies should the control be solely remote.

Optionally there are also a water-cooled version available which are usually assembled and offered in cabinet systems with a complete water-cooling distribution inside. For DIY water-cooled systems, single units can also be obtained upon request.

Further options are function generator, calibration with protocol and extended warranty.

The devices are CE, UL as well as CSA certified.

Energy efficiency: Auto-ranging, high efficiency, temperature controlled fans, water cooling system

Scope of delivery:

Power Supply Unit

Test report

AC connector plug (clamp type)

Set for AC cable strain relief

Set DC terminal cover

2x Plug for Remote Sense

Terminal cover sense

USB cable 1,8m

USB-Stick with documentation and Software

## EPS/PU 10750-240 6U Power Supply without display

---



EPS/PU\_10000\_6U\_front

### General data

Behavior	Unidirectional
Technology	Switching
Operation modes	CV. CC. CP. CR
Mains	380V/400V/480V AC +-10% 3ph.
Input frequency	45-65Hz
Power factor	>0,99
Display	./.
Voltage Stability Load	<0,01% fs
Voltage Stability Mains	<0,01% (+-10%)
Response time Voltage	<1,5ms (10-100%)
Rise time Voltage	max.10ms (10-90%)
Current Stability Load	<0,1% (0-100%)
Current Stability Mains	<0,05% (+-10%)
Rise time Current	max.2ms (10-90%)
Output Current Limitation	Standard
Overvoltage category	2
Overheat protection	Standard
Isolation In-/Output	3750V DC
Isolation Output/Enclosure	neg.+1500V DC, pos.+2000V DC max.
Protection class	1
Series operation	Standard only source
Parallel operation	Master-Slave
Current sharing	Standard
Cooling	Fan
Operation temperature	0-50°C

Storage temperature	-20...70°C
Humidity	<80% n.c
Attitude	<2000m
Design	19 inch
Standards	EN/UL/CSA-C22.2 61010-1,EN55011 cl.B,EN61326-1
Power fail	Standard
Function generator	Opt.EPS/MC
Output Preset	Standard
Capacity	765µF

### **Interfaces**

Analog Isolation	Standard
Accuracy Interface	0-10V <= 0.2%; 0-5V <=0.4%
USB Interface	Standard
RS232 Interface	Option EPS/IF-AB R
CAN Interface	Opt.EPS/IF-AB-CAN/O
Profibus	Option EPS/IF-AB PB
Ethernet Interface	Standard, Opt.IF-ETH2P
Ethercat Interface	Option EPS/IF-AB-ECT
Software	Standard EPS/PC, Option EPS/MC

### **Technical data**

Output Voltage	0-750 VDC
Output Current	0-240 A
Output Power	0-60000 W
Input Current	56A@400V
Efficiency	96,5%
Ripple U	800mVpp(20Mhz)/200mVrms(300k)
Ripple I	<26mArms
Resistance Adjustment Range 1	0,1-185 Ohm
Remote Sensing	Standard
Dimensions in mm (WxHxD)	483 x 267 x 668
Weight	76 kg
Order code	202227

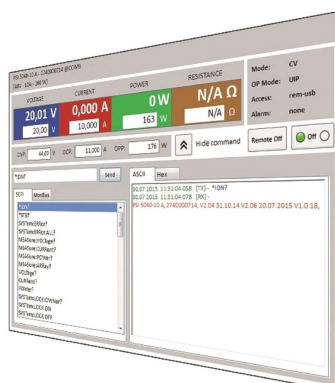
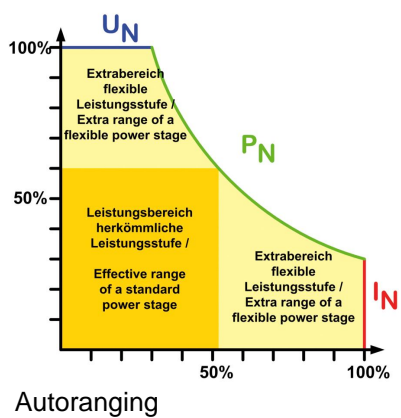
### **Options**

Option 1	Calibration with protocoll EPS/I10000 CAL
Option 2	Extended Warranty 2 / 3 / 5 years EPS/Gx
Option 4	EPS/WC-60 kW Water cooler
Option 5	EPS/BNC Cable Share-Bus connection cable
Option 6	EPS/SL 4x 2x AWG Master-Slave patch cable



## Series EPS/PU 10000 6U

EPS/PUx 10000\_6U rear



EPS/PC\_Software



EPS/PUx 10000 Rack rear

---

Subject to modification without notice, errors and omissions excepted

EPS Stromversorgung GmbH  
Electronic Power Supplies  
Alter Postweg 101, 86159 Augsburg/Germany  
Tel.: +49 (0) 821 570451-0  
E-mail: [sales@eps-germany.de](mailto:sales@eps-germany.de)  
[www.eps-germany.de](http://www.eps-germany.de)