



## EPS - Datasheet

### Series EPS/EL 9000 T/DT

The conventional, electronic loads »EPS/EL 9000-T« (Tower) and »EPS/EL 9000 DT« (Desktop) of EPS Electronic Power Supplies are especially suitable for research laboratories, test applications or educational, all due to their compact construction in a rugged desktop enclosure. The DC input range features new voltages up to 750V, currents up to 60A at power ratings with 1200W. Apart from basic functions of electronic loads, set point curves can be produced in the integrated function generator (sine, rectangular, triangular and other curve types). Arbitrary curves (100 sequences) can be stored on and uploaded from a USB stick.

For purposes of testing all kinds of batteries, such as for example constant current or constant resistance discharging, the devices offer a battery test mode. It counts values for elapsed testing time and consumed capacity (Ah) and energy (Wh). Data recorded by the PC during tests with EPS/PC Software can be exported as Excel table in CSV format and analysed later in MS Excel or similar tools and even visualised as a discharge diagram. For more detailed setup, there is also an adjustable threshold to stop the battery test on low battery voltage, as well an adjustable max. test period. The battery test function is usually applied on the DC input current and can either be selected and run in static (constant current) or dynamic (pulsed current) mode at the load (HMI).

For the remote control using a PC or PLC there are provided as standard with USB and Ethernet/LAN ports on the rear side, as well as a fast and galvanically isolated analog interface (Option Analog and LAN at EPS/EL 9000 T). The configuration, if at all necessary, is simple. Thus the loads may, for example, be operated with other loads or even other types of equipment using the digital interfaces. Several units with the same nominal voltage and preferably the same model can be connected for parallel operation, in order to get a higher total power. A carrying handle can serve as tilt stand, allowing for simple setup of different positions by the user in order to make it easier to read from the display or access the control elements.

To the unit we provide a Software Power Control free of costs, with which you can do nearly all the functions, which are possible at the unit itself.

For an option a UK wall socket adapter as well as EPS/EL 9000 DT a 19" frame kit is available.

Energy Efficiency: temperature regulated fans

Scope of delivery:

EI. Load

AC-mains cable

USB-cable 1.8m

USB-Stick with manual and Software EPS/PC

## EPS/EL 9360-20 DT Electronic Load

---



EPS/EL9000-DT\_front\_right

### General data

Technology	Switching
Operation modes	CC.CV.CP.CR
Mains	90-264 VAC
Input frequency	45-65Hz
Input Current Limitation	Standard
Display	HMI TFT Touch Panel
Voltage resolution	0,1V
Voltage accuracy	$\leq 0,1\%$ N.
Voltage Stability Mains	$< 0,05\%$ N.
Rise time Voltage	$< 50\mu\text{s}$ (10-90% L.)
Current Resolution	0,001 A
Current Accuracy	$\leq 0,2\%$
Current Stability Mains	$< 0,1\%$ N.
Rise time Current	$< 24\mu\text{s}$ (10-90% N.)
Power Accuracy	$< 0,5\%$ N.
Overheat protection	Standard
Isolation In-/Output	2500V max.
Isolation Output/Enclosure	$\pm 400\text{V}$ max.
Parallel operation	Standard
Cooling	Fan
Operation temperature	0-50°C
Storage temperature	-20...70°C
Humidity	$< 80\%$ n.c
Attitude	2000m /NN
Design	Desktop

Standards	EN61010-1,EN61000-6-2/3
Power fail	Standard
Function generator	+arbitrary
Memory	5 Profile

**Interfaces**

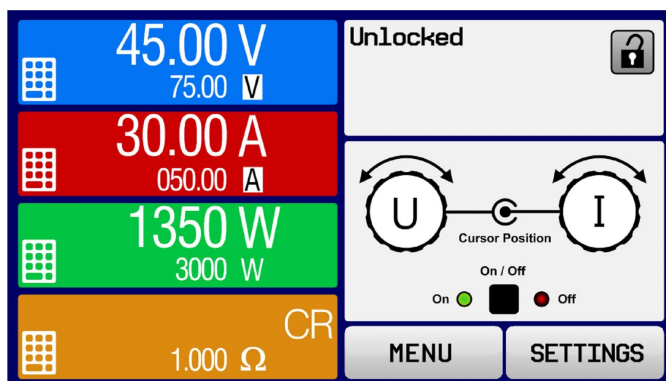
Analog Isolation	Standard (intern)
USB Interface	Standard
Ethernet Interface	Standard
Software	Standard EPS/PC, Option EPS/MC

**Technical data**

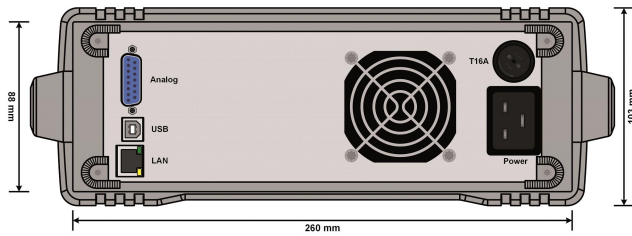
Input Power	900 W
Input Voltage	0-360 VDC
Input Current	0-20 A
Resistance Adjustment Range 1	1,6-540 Ohm
Resistance Resolution Range 1	0,01 Ohm
Remote Sensing	max. 5% Unenn
Dimensions in mm (WxHxD)	276 x 103 x 415
Weight	7,5 kg
Order code	300210

**Options**

Option 1	Calibration EPS/EL 9000/D-T CAL
Option 2	19" Mounting frame EPS/DT-R
Option 3	Extended Warranty 3 / 5 years EPS/G
Option 4	UK wall socket adapter EPS/UK



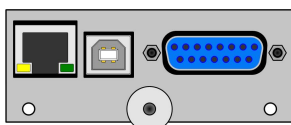
EPS/EL 9000B TFT\_HMI Touch panel



EPS/EL9000-DT\_rear



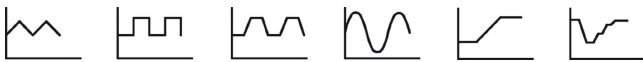
EPS/EL9000-T\_front\_right



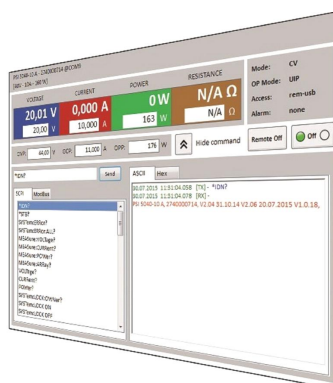
EPS/IF KE4



EPS/9000-DT 19 Frame



EPS 9000\_Functions



EPS/PC\_Software